

**LEGEND**

- DOCK LEVELER
- FUTURE DOOR
- FUTURE DOOR EXPANSION
- 10'-0" X 12'-0" OPENING
- FUTURE EXPANSION

- MAIN ENTRANCE
- EXPANSION JOINTS
- SPRINKLER ZONES
- POSSIBLE RAIL DOOR
- FENCED AREA
- TAPE OR NOMINAL BARRIER

EOD/30 REOD/30 M/40 A/50 H/60 DS CS E P

EDGE OF DOCK/CAPACITY  
RAISED EDGE OF DOCK/CAPACITY  
MECHANICAL LEVELER/CAPACITY  
AIR LEVELER/CAPACITY  
HYDRAULIC LEVELER/CAPACITY  
DOCK SHELTER  
COMPRESSION SEAL  
ELECTRICAL ROOM  
PUMP ROOM  
EXIT

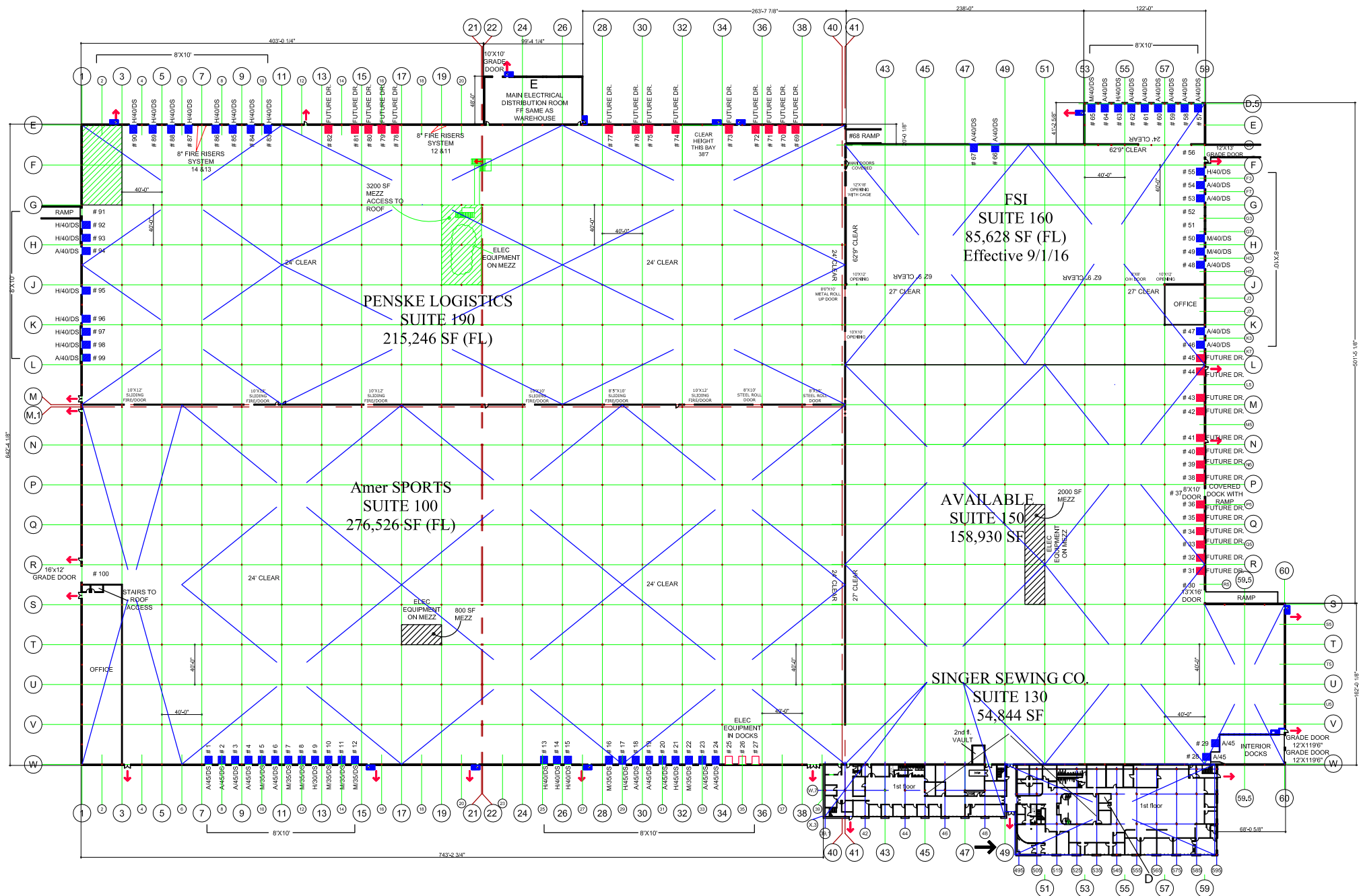
**EXISTING OH DOORS**

	DRIVE IN 8'X10'	DRIVE IN 10'X10'	DRIVE IN 12'X13'	DRIVE IN 12'X19'6"	DRIVE IN 13'X16'	DRIVE IN 13'X18'	DRIVE IN 16'X10'	DRIVE IN 16'X12'	DRIVE IN 17'X18'	DOCK 8'X10'	TOTAL
NORTH	—	1	—	—	—	2	—	—	1	20	24
EAST	1	—	1	2	1	—	1	—	—	8	14
SOUTH	—	—	—	—	—	—	—	—	—	24	24
WEST	1	2	—	—	—	—	—	1	—	8	12
TOTAL	2	3	1	2	1	2	1	1	1	60	74



# Interchange Business Center

1714 Heil Quaker Boulevard  
Nashville, TN 37086-3525



**BUILDING SHELL**

- CLEAR HEIGHT**
  - 24', 27', & 62'9"
- FLOOR**
  - DOCK AREA & WAREHOUSE
  - 6" CONCRETE REINFORCED W/ STEEL & FIBERMESH ON 6" STONE
- WALLS**
  - INSULATED SHEET METAL SIDING
- ROOF**
  - SINGLE PLY TPO OVER METAL DECK WITH INTERNAL RAIN LEADERS
- STEEL FRAME**
  - 12" STRUCTURAL COLUMNS WITH A JOIST / JOIST GIRDER SYSTEM

**BUILDING SYSTEMS**

- ELECTRICAL SERVICE**
  - RE-DESIGN IN PROGRESS
- WAREHOUSE LIGHTING**
  - MINIMUM ONE (1) T5HO FLORESCENT WITH MOTION SENSOR FIXTURE PER BAY PROVIDING UP TO 20 FC
- NATURAL GAS SERVICE**
  - SUPPLIED BY NASHVILLE PIEDMONT COMPANY 6" MAIN
- HEATING**
  - GAS FIRED UNIT HEATERS SERVING WAREHOUSE PROVIDING 50 DEGREES AT 0 DEGREE OUTSIDE TEMPERATURE
- DOMESTIC WATER**
  - SUPPLIED BY METRO-DAVIDSON COUNTY 6" MAIN
- FIRE PROTECTION**
  - DENSITY SYSTEM (43 GPM / 2000 SF) ESFR W/K17 HEADS ELECTRIC PUMP (1500 GPM) W/WATER TANK
- SANITARY**
  - SUPPLIED BY METRO-DAVIDSON COUNTY 6" AND 4" GRAVITY MAINS

